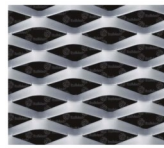
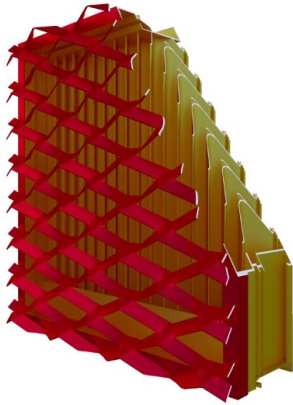


Model—RSR-545VPM

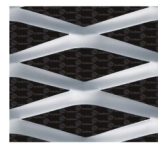
7" (178mm) DEEP STORM RESISTANT LOUVER WITH ITAL MESH



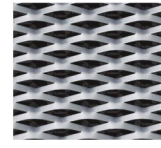
Decorative Screen from ITAL MESH is available in different colors and patterns.



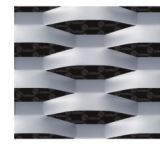
Brescia_75
42% FA



Brescia_200
52.3% FA



Roma_65
38% FA



Sienna_150
29.8% FA

PERFORMANCE:

- Free Area: **54.6%** , based on a test sample of 48 in (1219 mm) x 48 in (1219 mm)
- Beginning point of water penetration (@0.01oz. / ft2 of free area)—**1250fpm (6.35 m/s)**
- Maintains **Class A** rating with 29mph wind velocity @ 3 in/hr rainfall rate @ Max. intake core velocity – **984 fpm (5.0m/s)**
- Maintains **Class A** rating with 50mph wind velocity @ 8 in/hr rainfall rate @ Max. intake core velocity—**984fpm (5.0 m/s)**
- Intake pressure drop at beginning point of water penetration – **0.28 in. wg (70Pa)**
- Intake pressure drop @ 987 fpm free area velocity—**0.18 in. wg (45 Pa)**

Rainfall rate (in. per hour) : 3											
Wind velocity (mph) : 29											
Core Velocity, fpm (m/s)	0.0	98 (0.5)	197 (1.0)	295 (1.5)	393 (2.0)	492 (2.5)	590 (3.0)	688 (3.5)	787 (4.0)	885 (4.5)	984 (5.0)
Effectiveness (%)	100	100	100	100	100	100	100	100	100	100	100
Penetration Class	A	A	A	A	A	A	A	A	A	A	A
Rainfall rate (in. per hour) : 8											
Wind velocity (mph) : 50											
Core Velocity, fpm (m/s)	0.0	96(0.5)	197 (1.0)	288 (1.5)	396 (2.0)	482 (2.5)	587 (3.0)	691 (3.5)	791 (4.0)	888 (4.5)	984 (5.0)
Effectiveness (%)	100	100	100	100	100	100	100	100	99.5	99.6	99.6
Penetration Class	A	A	A	A	A	A	A	A	A	A	A
Classification	A = 99.9% - 99% ; B = 98.9% - 95% ; C = 94.9% - 80% ; D = below 80%										

Suggested Specifications:

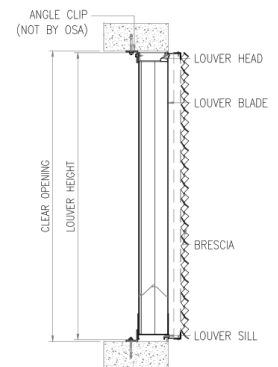
General: Furnish and install where indicated on drawings 7" (178mm) High Performance Rain Defense Louver Model with Ital Mesh as manufactured by Ontario Specialty Architectural Products.

System Description:

OSA Rain Storm Resistant series with decorative mesh extruded aluminum construction; frame with channel profile; corner joints mitered and mechanically fastened, with continuous recessed caulking channel each side; intermediate mullions matching frame; gutters to drain rain water to jamb and mullion downspouts; rated for an air performance and water penetration maintained effectiveness rate of 0.99.

Material & Finishes:

- RSR-545VPM comprises :
 - Blades: Vertical – Multi Drain Profile
 - Frame depth: 7 inches (178 mm) deep.
 - Facing: Ital Mesh which is available in different colors and patterns.
- Metal Thickness: Frame 0.081 inch (2 mm); blades 0.070 inch (1.78 mm).
- Finish: PE-SDF / PVDF / Anodize after fabrication
- Color: As scheduled.
- Mullions: Concealed or Exposed.
- Screens: Bird mesh / Insect mesh
- Screen location: Interior
- Screening Material: Aluminium / Stainless Steel



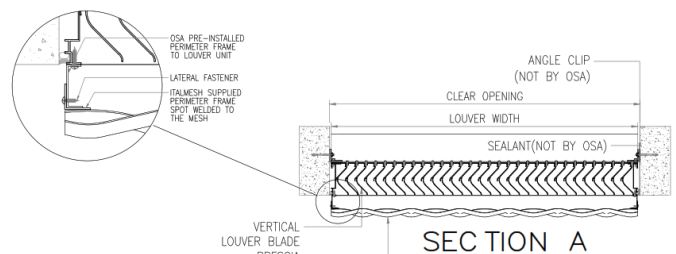
SECTION B

Louver Construction:

- Wind Load Resistance: Design to resist +ve and –ve wind load of ___ psf (___kPa) without damage or permanent deformation.
- Blades: One piece extrusions with reinforcing bosses, supported and lined up with heavy-gage extruded aluminum blade braces, positively inter-locked to each blade and mechanically secured to structure by aluminum and stainless steel fastenings.
- Exposed edges and ends of metal dressed smooth, free from sharp edges.
- Exposed connections and joints constructed to exclude water.

Optional Accessories:

- Extended Sill Flashing
- Insulated and Non-insulated Bank-off Panels
- Sub-frames
- Visible Mullions
- Invisible mullions for continuous blade and appearance.



SECTION A

Warranty:

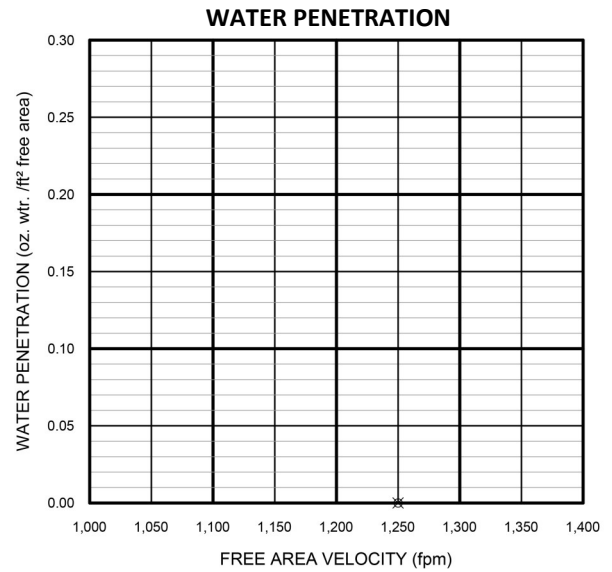
OSA louvers warranted for 2 years against defective material and workmanship, and 25 Years for Finishes.

Model—RSR-545VPM

7" (178mm) STORM RESISTANT LOUVER WITH ITAL MESH



		FREE AREA (ft ² and m ²)									
		WIDTH (IN & mm)									
		12	24	36	48	60	72	84	96	108	120
		305	610	914	1219	1524	1829	2134	2438	2743	3048
HEIGHT (IN & mm)	24	0.58	1.70	2.83	3.95	5.07	6.19	7.31	8.43	9.55	10.67
	610	0.05	0.16	0.26	0.37	0.47	0.58	0.68	0.78	0.89	0.99
	36	0.93	2.72	4.51	6.31	8.10	9.89	11.68	13.47	15.26	17.05
	914	0.09	0.25	0.42	0.59	0.75	0.92	1.09	1.25	1.42	1.59
	48	1.29	3.77	6.24	8.72	11.20	13.68	16.15	18.63	21.11	23.59
	1219	0.12	0.35	0.58	0.81	1.04	1.27	1.50	1.73	1.96	2.19
	60	1.63	4.77	7.91	11.05	14.18	17.32	20.46	23.59	26.73	29.87
	1524	0.15	0.44	0.74	1.03	1.32	1.61	1.90	2.19	2.48	2.78
	72	1.98	5.79	9.61	13.42	17.23	21.04	24.85	28.66	32.47	36.28
	1829	0.18	0.54	0.89	1.25	1.60	1.96	2.31	2.66	3.02	3.37
	84	2.33	6.82	11.30	15.79	20.27	24.75	29.24	33.72	38.21	42.69
	2134	0.22	0.63	1.05	1.47	1.88	2.30	2.72	3.13	3.55	3.97
	96	2.68	7.84	12.99	18.15	23.30	28.45	33.61	38.76	43.91	49.07
2438	0.25	0.73	1.21	1.69	2.17	2.64	3.12	3.60	4.08	4.56	
108	3.03	8.86	14.69	20.52	26.34	32.17	38.00	43.82	49.65	55.48	
2743	0.28	0.82	1.37	1.91	2.45	2.99	3.53	4.07	4.62	5.16	
120	3.38	9.88	16.39	22.89	29.39	35.89	42.39	48.89	55.39	61.89	
3048	0.31	0.92	1.52	2.13	2.73	3.34	3.94	4.54	5.15	5.75	



The AMCA Water Penetration Test provides a method for comparing various louver models and designs as to their efficiency in resisting the penetration of rainfall under specific laboratory test conditions. The point of zero water penetration is defined as that velocity where the water penetration curve projects through .01 oz of water penetration per sq. ft. of louver area. **The beginning point of water penetration for RSR-545VPM is 1250 fpm free**

Test Data

- Data corrected to standard air density. Test Sample Size 48"x48". The AMCA Certified Ratings Seal does not apply for louvers with decorative screens.

