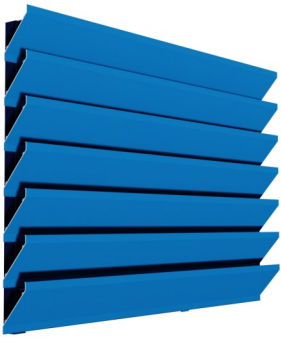


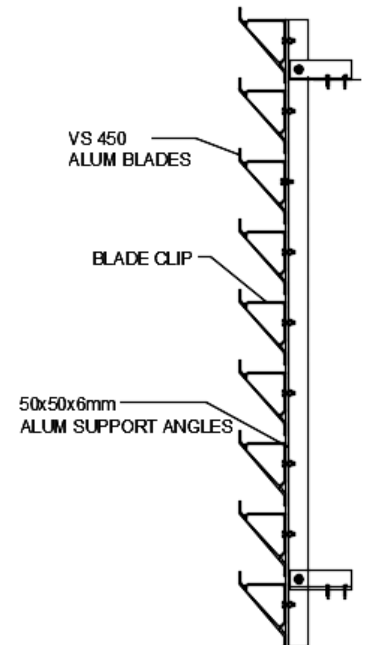
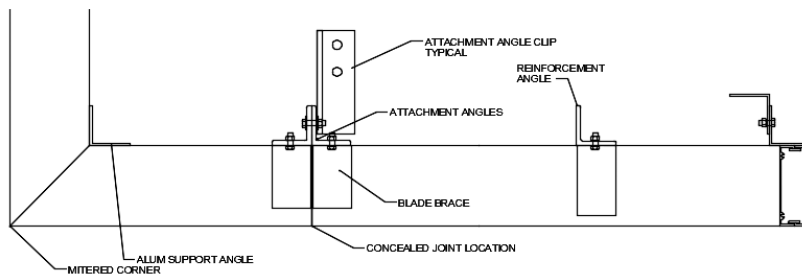
# Model—VS-450

102mm DEEP VISION SCREEN



## AIRFLOW PERFORMANCE

- \* Free Area : 54.8%, based on a sample of 48 in. (1220mm) x 48 in. (1220mm)
- \* Discharge loss coefficient Classification—Class 2
- \* Pressure Drop @ 2.5 m/s Face Velocity—36.1 pa



## FEATURES:

- Continuous blade assembly
- Good sight-proofing characteristics

## Material & Finishes:

1. VS-450 SCREEN comprises
  - a. Blades: 4" deep reverse slope sight-proof
2. Metal Thickness: Mullion 0.081 inch (2.0 mm); blades 0.081 inch (2.0 mm).
3. Finish: PE-SDF / PVDF / Anodize after fabrication
4. Color: As scheduled.
5. Mullions: Concealed or Exposed.
6. Screens: Bird mesh / Insect mesh AVAILABLE AS OPTIONAL ACCESSORIES.
7. Screen location: Interior
8. Screening Material: Aluminium / Stainless Steel

## Louver Construction:

1. Wind Load Resistance: Design to resist +ve and -ve wind load of \_\_\_ psf (\_\_\_ kPa) without damage or permanent deformation.
2. Blades: One piece extrusion blades with reinforcing bosses snap-locked to heavy-gage extruded aluminum blade braces, attached to structural supports. Each blade brace is mechanically secured to structure using stainless steel fastenings.
3. Supplied semi-knocked down for field assembly.
4. Mitered corners
5. Exposed edges and ends of metal dressed smooth, free from sharp edges.

## Warranty:

OSA louvers warranted for 2 years against defective material and workmanship, and 20 Years for Finishes.