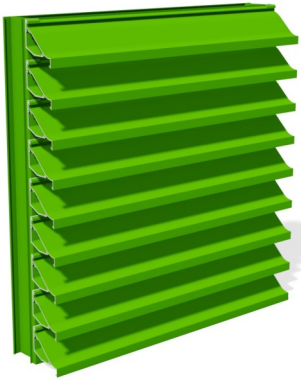


# Model—SA-445-SL4

## 203.6mm DEEP SAND TRAP COMBINATION LOUVER

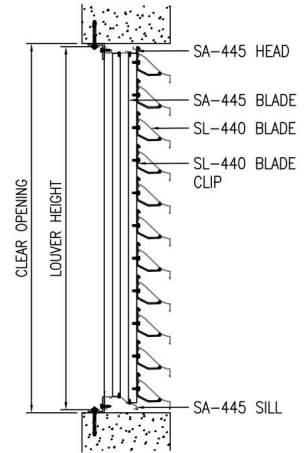


### AIRFLOW PERFORMANCE:

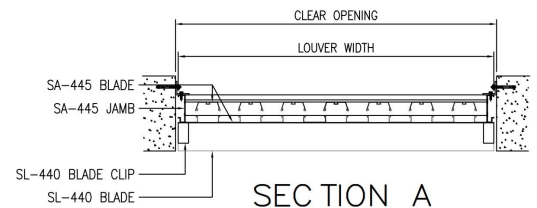
- Free Area: 40%; based on a test sample of 48in (1219.2mm) x 48in (1219.2mm)
- Airflow Classification—**Class 3**
- Static Pressure Loss: **Not more than (16 Pa) @ (1.2 m/s) Face Velocity**

### WIND DRIVEN SAND REJECTION PERFORMANCE:

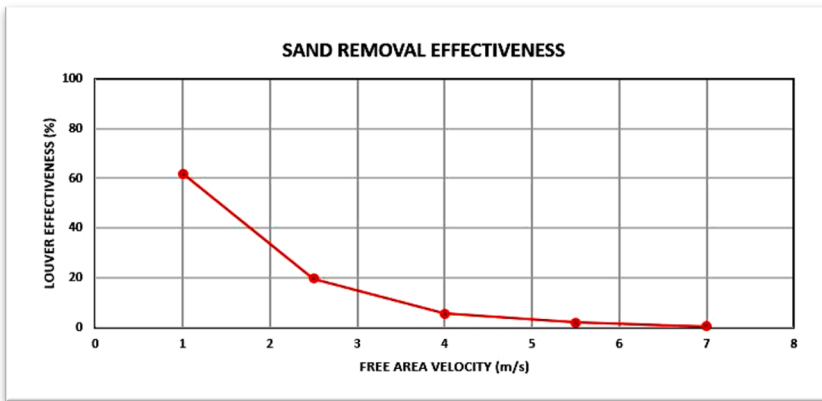
Free Area Velocity (m/s)	1	2.5	4	5.5	7
Weight of Sand (kg)	1	1	2	2	2
Discharge Duration (s)	200	75	100	70	60
Sand feed rate (kg/s)	0.005	0.013	0.020	0.029	0.033
Effectiveness (%)	62	19.6	5.6	2	0.5
Penetration Class	D	D	D	D	D



SECTION B



SECTION A



**Test Data:** Grading of the sand used for wind driven sand performance tests shall be as per Annex H, Table 8, of ANSI/AMCA Standard 500-L.

### System Description:

101.6mm deep extruded aluminum construction; frame with channel profile; corner joints mitered and mechanically fastened, with continuous recessed caulking channel each side; tested for wind driven sand & air performance in accordance with ANSI/AMCA standard 500-L.

### Material & Finishes:

- SA-445-SL4 comprises 101.6 mm sand trap louver core with 102 mm deep continuous horizontal fascia blades all in extruded aluminum frames. A galvanized steel option is also available.
  - Blades: Horizontal fixed blade in the front and vertical sand trap blade at the back
  - Total system depth: 203.6mm deep
- Metal Thickness: Frame 2 mm; Horizontal Front blades 1.60 mm and 2 mm options are available.
- Finish: PE-SDF / PVDF / Anodize after fabrication
- Color: As scheduled.
- Mullions: Exposed
- Screens: Bird mesh / Insect mesh
- Screen location: Interior
- Screening Material: Aluminum / Stainless Steel

### Louver Construction:

- Wind Load Resistance: Design to resist +ve and -ve wind load of \_\_\_ psf (\_\_\_ kPa) without damage or permanent deformation.
- Blades: One piece extrusions with reinforcing bosses, supported and lined up with heavy-gage extruded aluminum blade braces, positively inter-locked to each blade and mechanically secured to structure by aluminum and stainless steel fastenings.
- Exposed edges and ends of metal dressed smooth, free from sharp edges.
- Exposed connections and joints constructed to exclude water.

### Warranty:

OSA louvers warranted for 2 years against defective material and workmanship, and 20 Years for Finishes.

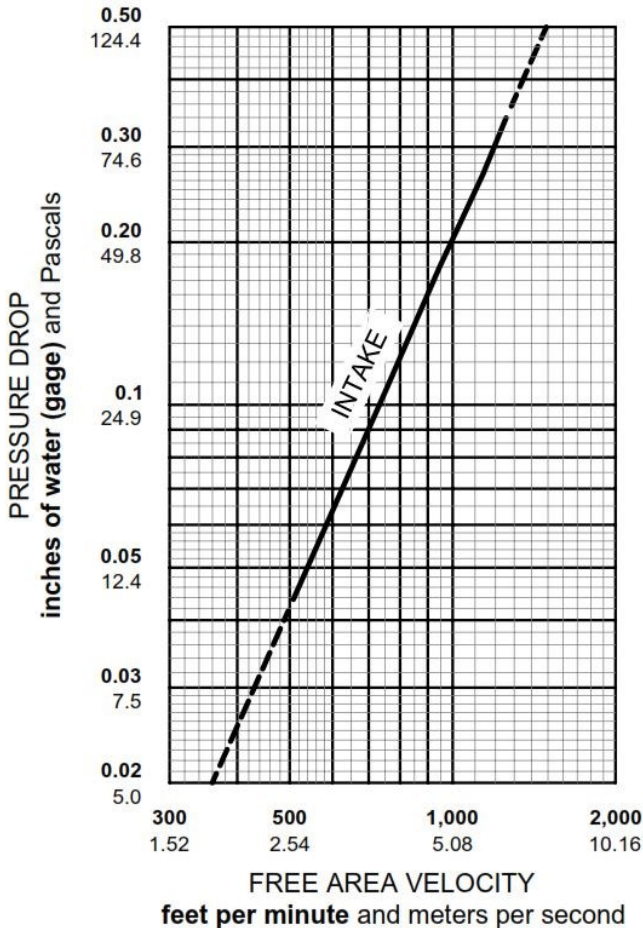
# Model—SA-445-SL4

## 203.6mm DEEP SAND TRAP COMBINATION LOUVER



EXTENDED FREE AREA CHART (ft <sup>2</sup> and m <sup>2</sup> )								
HEIGHT (IN & mm)								
	12	24	36	48	60	72	84	96
	305	610	914	1219	1524	1829	2134	2438

WIDTH (IN & mm)	EXTENDED FREE AREA CHART (ft <sup>2</sup> and m <sup>2</sup> )								
	12	24	36	48	60	72	84	96	
12	0.32	0.74	1.17	1.60	2.02	2.45	2.88	3.30	
305	0.03	0.07	0.11	0.15	0.19	0.23	0.27	0.31	
24	0.64	1.49	2.34	3.19	4.05	4.90	5.75	6.60	
610	0.06	0.14	0.22	0.30	0.38	0.46	0.53	0.61	
36	0.95	2.23	3.51	4.79	6.07	7.35	8.63	9.90	
914	0.09	0.21	0.33	0.45	0.56	0.68	0.80	0.92	
48	1.27	2.98	4.68	6.39	8.09	9.80	11.51	13.21	
1219	0.12	0.28	0.44	0.59	0.75	0.91	1.07	1.23	
60	1.58	3.70	5.81	7.92	10.04	12.16	14.28	16.39	
1524	0.15	0.34	0.54	0.74	0.93	1.13	1.33	1.52	
72	1.88	4.39	6.90	9.41	11.92	14.44	16.95	19.46	
1829	0.17	0.41	0.64	0.87	1.11	1.34	1.58	1.81	
84	2.17	5.08	7.98	10.90	13.81	16.72	19.63	22.53	
2134	0.20	0.47	0.74	1.01	1.28	1.55	1.82	2.09	
96	2.47	5.77	9.06	12.37	15.67	18.98	22.28	25.58	
2438	0.23	0.54	0.84	1.15	1.46	1.76	2.07	2.38	
108	2.76	6.46	10.15	13.86	17.56	21.26	24.96	28.65	
2743	0.26	0.60	0.94	1.29	1.63	1.98	2.32	2.66	
120	3.06	7.16	11.24	15.34	19.44	23.54	27.64	31.72	
3048	0.28	0.67	1.05	1.43	1.81	2.19	2.57	2.95	



### Test Data

- Data is corrected to standard air density.