

MODEL : XWGF & XWCGF

Description:

Flush mounted exterior wall, expansion joint system ,with aluminum frames and secondary barrier .

Technical Data:

- Metals :Extruded Aluminum - 6063-T6 ASTM B221
- Santoprene Seals: Single Durometer Gasket ASTM D2000,UV resistant

Material Finishes:

- Aluminium frame are in mill as standard finish.
- Gasket is available in black, gray, beige and white* colors.

Limitations:

- Standard length 3 meter
- Maximum length 6.1 meter

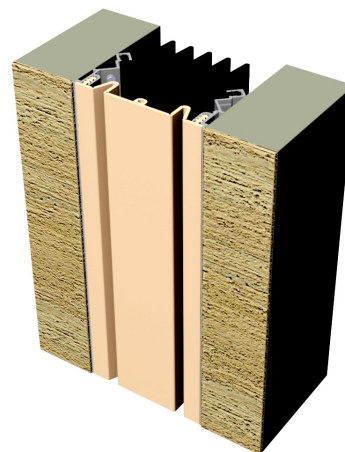
Optional Accessories:

- Silicon sealant

Installation:

See manufacturer's standard installation instructions.

**Subject to minimum order quantity*



Santoprene
Santoprene Seals

Key Features:

- Designed for exterior wall application with weatherproof seal
- Movement +/-50%
- SANTOPRENE gasket
- Flush mounted application
- Multi directional movement capability

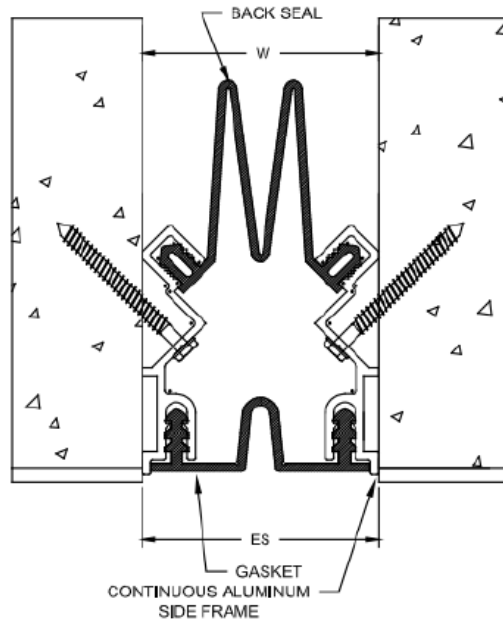
Applications:

- For all types of exterior wall finishes
- Available for gap sizes from 2" up-to 6" *

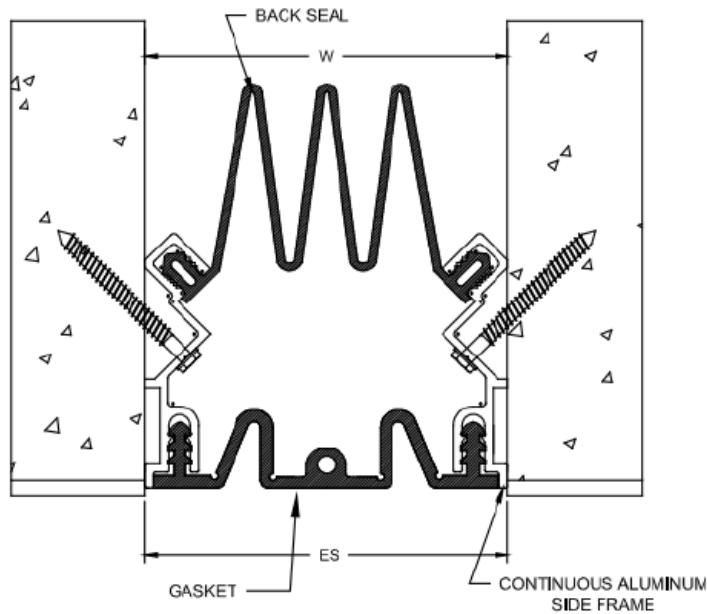
**Contact factory for larger gap sizes*

Model	Min Joint Opening	Nominal Joint Width (W)	Max Joint Opening	Exposed Surface (ES)	Overall Width	Overall Height
XWGF2	1.25"(32mm)	2.00"(51mm)	3.00"(76mm)	2.00"(51mm)	2.00"(51mm)	N/A
XWGF3	1.25"(32mm)	3.00"(76mm)	4.50"(114mm)	3.00"(76mm)	3.00"(76mm)	N/A
XWGF4	1.25"(32mm)	4.00"(102mm)	6.00"(152mm)	4.00"(102mm)	4.00"(102mm)	N/A
XWCGF2	1.25" 32mm)	2.00"(51mm)	3.00"(76mm)	2.00"(51mm)	2.00"(51mm)	N/A
XWCGF3	1.25"(32mm)	3.00"(76mm)	4.50"(114mm)	3.00"(76mm)	3.00"(76mm)	N/A
XWCGF4	1.25"(32mm)	4.00"(102mm)	6.00"(152mm)	4.00"(102mm)	4.00"(102mm)	N/A

Wall to Wall/Corner



XWGF (2")



XWGF (3" & 4")