

MODEL : FD & FWD

Description:

Recess mounted metal floor cover ; highly resistant to rolling loads, distortion, and wear. Maintains a virtually flush finish ideal for heavy rolling equipment. Frame depths of 1",2",3" & 4" are available meet various site conditions .

Technical Data:

- Metals :Extruded Aluminum - (6063-T5,T6) & (6061-T5,T6) ASTM B221

Point Load Rating:

- 2200lbs (1000kg)

Material Finishes:

- All aluminum frames are in mill as standard finish

Limitations:

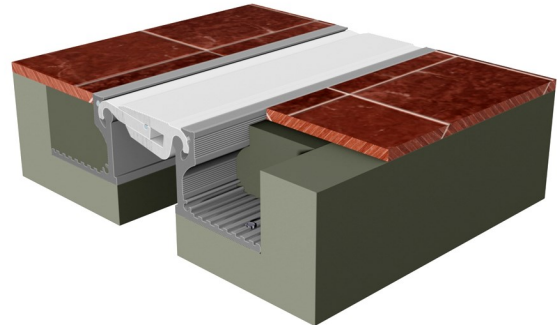
- Standard length 3 meter
- Maximum length 6.1 meter

Optional Accessories:

- Moisture barrier, fire barrier

Installation:

See manufacturer's standard installation instructions.



Bump Free



Compliant



Heavy Duty



Load Rating

Key Features:

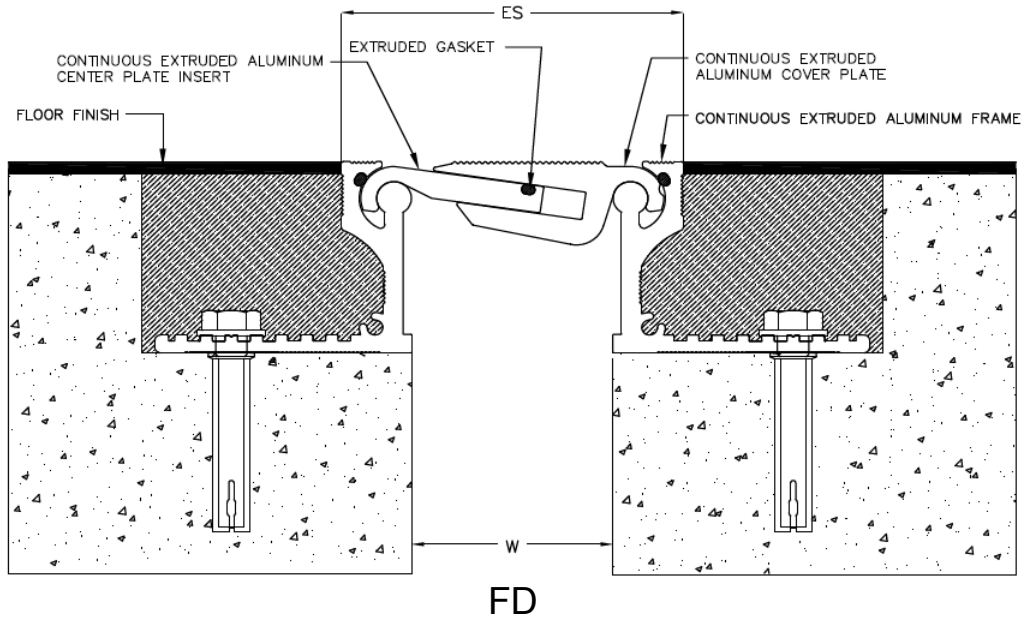
- The unique interlocking cover design allows for horizontal movement in the floor slab, as well as vertical deflection
- Movement +/- 25%
- Bump-free design
- Slip resistant design
- Low maintenance

Applications:

- Designed for forklifts and trucks with full pneumatic tyres
- Vehicles and goods handling trucks with tyres of hard plastics
- Can be installed in car parks
- Suitable for gap sizes of 1" , 2" , 3" & 4

Model	Min Joint Opening	Nominal Joint Width (W)	Max Joint Opening	Exposed Surface (ES)	Overall Width	Overall Height
FD1-1	0.87"(22mm)	1.00"(25mm)	1.80"(46mm)	1.61"(41mm)	6.28"(160mm)	1.00"(25mm)-4.00"(102mm)
FD2-1	1.58"(40mm)	2.00"(51mm)	2.50"(64mm)	3.41"(87mm)	7.11"(181mm)	1.00"(25mm)-4.00"(102mm)
FD3-1	2.40"(60mm)	3.00"(76mm)	3.75"(95mm)	4.41"(112mm)	8.11"(206mm)	1.00"(25mm)-4.00"(102mm)
FD4-1	3.13"(80mm)	4.00"(102mm)	5.77"(147mm)	5.41"(137mm)	9.11"(232mm)	1.00"(25mm)-4.00"(102mm)
FWD1-1	0.87"(22mm)	1.00"(25mm)	1.80"(46mm)	1.61"(41mm)	3.64"(93mm)	1.00"(25mm)-4.00"(102mm)
FWD2-1	1.58"(40mm)	2.00"(51mm)	2.50"(64mm)	3.41"(87mm)	5.26"(134mm)	1.00"(25mm)-4.00"(102mm)
FWD3-1	2.45"(62mm)	3.00"(76mm)	4.00"(102mm)	4.41"(112mm)	6.26"(159mm)	1.00"(25mm)-4.00"(102mm)
FWD4-1	3.13"(80mm)	4.00"(102mm)	5.77"(145mm)	5.41"(137mm)	7.26"(184mm)	1.00"(25mm)-4.00"(102mm)

Floor to Floor



Floor to Wall

