

### MODEL : PES-F

#### Description:

Recess mounted single extruded SANTOPRENE seal with aluminum side frames ,designed for parking decks.

#### Technical Data:

- Metals :Extruded Aluminum - 6063-T6 ASTM B221
- Compression Seal: Santoprene
- Adhesive :Epoxy

#### Point Load Rating:

- 2200lbs (1000kg)

#### Material Finishes:

- Aluminium frames are in mill as standard finish.
- Gasket is available in black as standard color, other colors\* available on request.

#### Limitations:

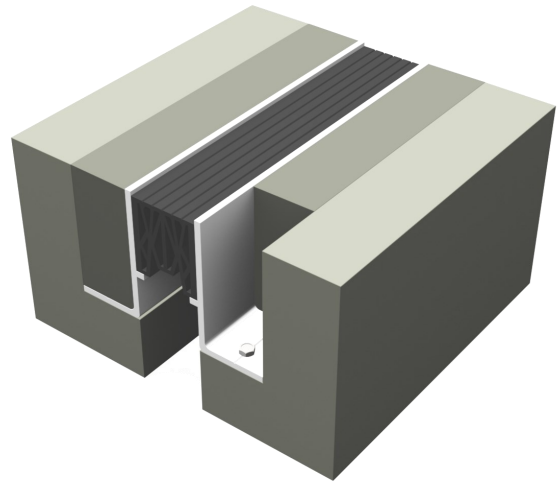
- Standard length :
  - Aluminium extrusion: 3 meters
  - Seals: 15 meters

#### Optional Accessories:

- Fire barrier

#### Installation:

See manufacturer's standard installation instructions.



Load Rating

#### Key Features:

- Frame mount design for joint edge protection
- Movement +/-50 %
- NON elastomeric concrete installation

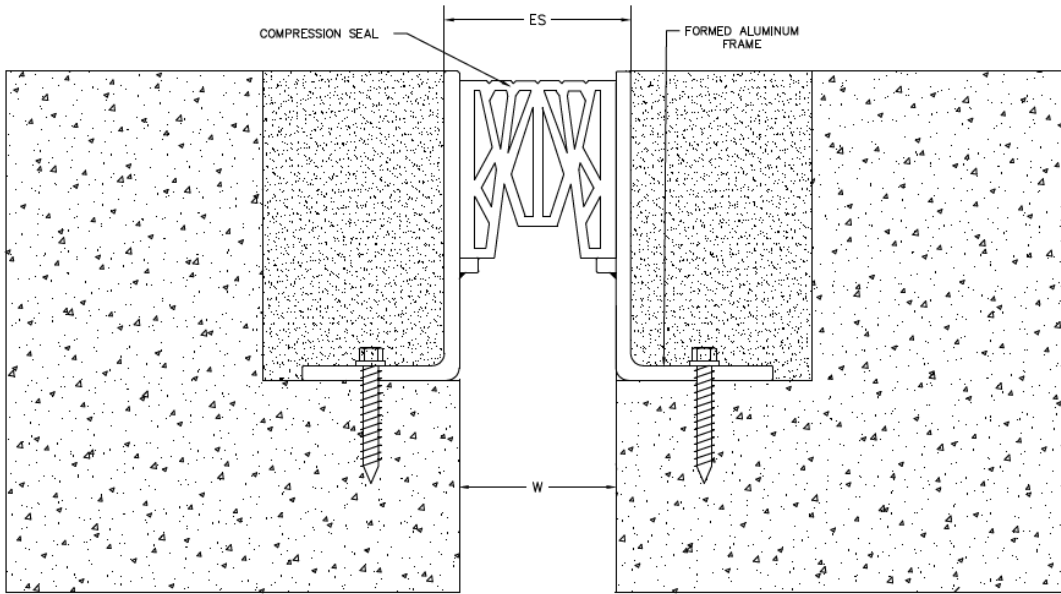
#### Applications:

- Designed for parking garage application.
- Suitable for gap sizes of 1",2",3" & 4"

\*Subject to minimum order quantity

| Model          | Min Joint Opening | Nominal Joint Width (W) | Max Joint Opening | Exposed Surface (ES) | Profile Width | Profile Height |
|----------------|-------------------|-------------------------|-------------------|----------------------|---------------|----------------|
| <b>PES1F</b>   | 0.50"(13mm)       | 1.00"(25mm)             | 1.50"(38mm)       | 1.38"(35mm)          | 5.00"(127mm)  | 3.94"(100mm)   |
| <b>PES1.5F</b> | 0.75"(19mm)       | 1.25"(32mm)             | 1.75"(44mm)       | 1.88"(48mm)          | 5.50"(140mm)  | 3.00"(76mm)    |
| <b>PES2F</b>   | 1.00"(25mm)       | 2.00"(51mm)             | 2.80"(71mm)       | 2.38"(60mm)          | 6.00"(152mm)  | 3.94"(100mm)   |
| <b>PES2.5F</b> | 1.25"(32mm)       | 2.50"(64mm)             | 3.50"(89mm)       | 2.88"(73mm)          | 6.50"(165mm)  | 3.94"(100mm)   |

## Floor to Floor



PES-F

\*Floor to wall model available  
contact factory for details