

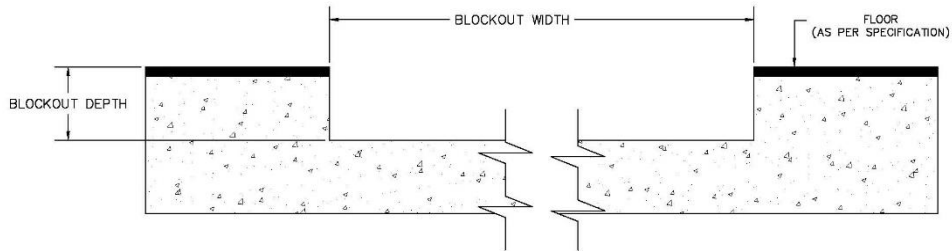
Installation Instructions

ENTRANCE MAT SYSTEMS – CARPET INSERT SERIES (AM1000)

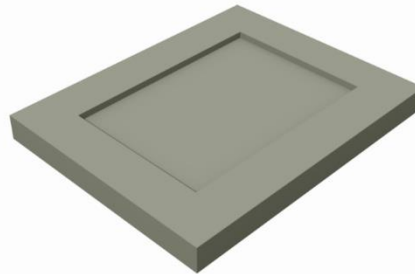
STEP 1 SITE PREPARATION

- The block out must be prepared to receive the mat frame
- The block out width will vary with model as noted on the shop drawing.

(See illustration below)

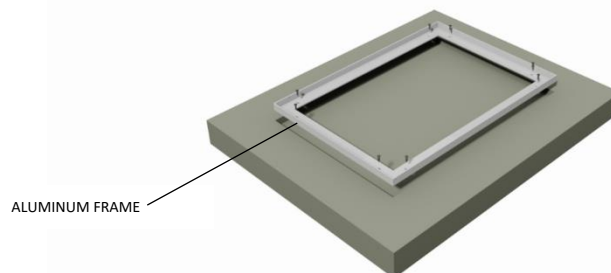


- The block out depth will vary with model as noted on the shop drawing. However, the depth may be adjusted as needed to accommodate the floor finish material when required and as indicated on the architectural drawing.
- It is recommended that the block out be formed a minimum of 1/8" deeper to allow the block out to be leveled for ease of installation of mat frame.



STEP 2 FRAME INSTALLATION

- Assemble the angle frame utilizing the corner locks provided. The ends of the frame pieces have been pre-mitered to allow quick assembly.



Installation Instructions

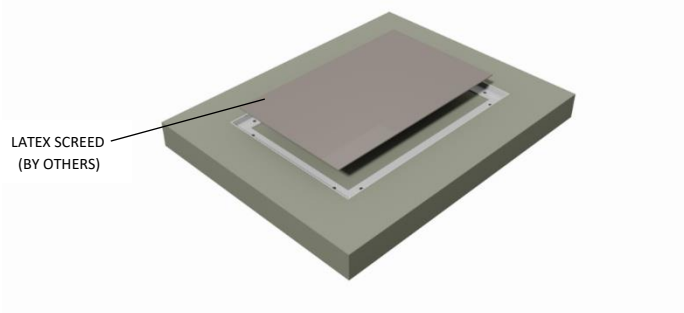
ENTRANCE MAT SYSTEMS – CARPET INSERT SERIES (AM1000)

STEP 3 FRAME INSTALLATION

- Set the frame assembly in the formed block out. Before fastening, double check the finished floor surface height, and ensure that frame assembly is both plumb and square. Install each fixings. Clean the concrete recess to remove all dirt, oily film, and debris.

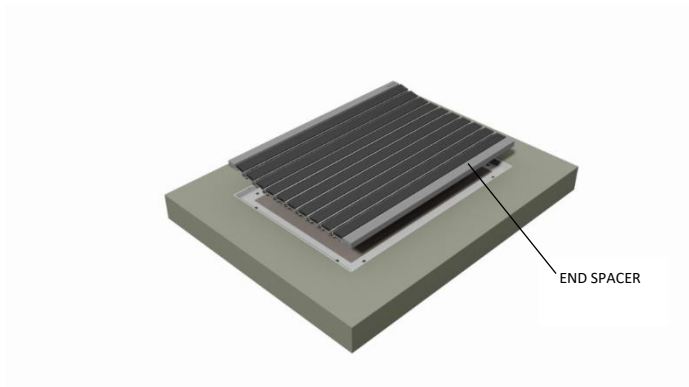
STEP 4 LATEX SCREED

- Begin applying latex screed (by others) to level the surface on which the mat will rest.

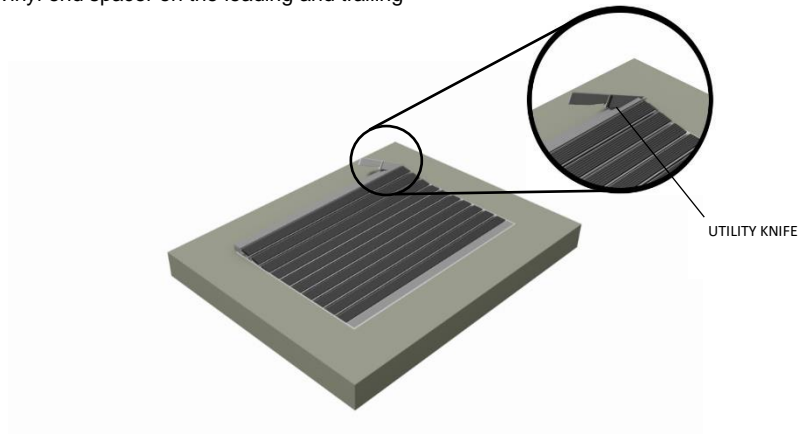


STEP 5 MAT INSTALLATION

- Unroll mat into the blockout.



- To ensure a proper fit. Trim the vinyl end spacer on the leading and trailing ends with a utility knife.

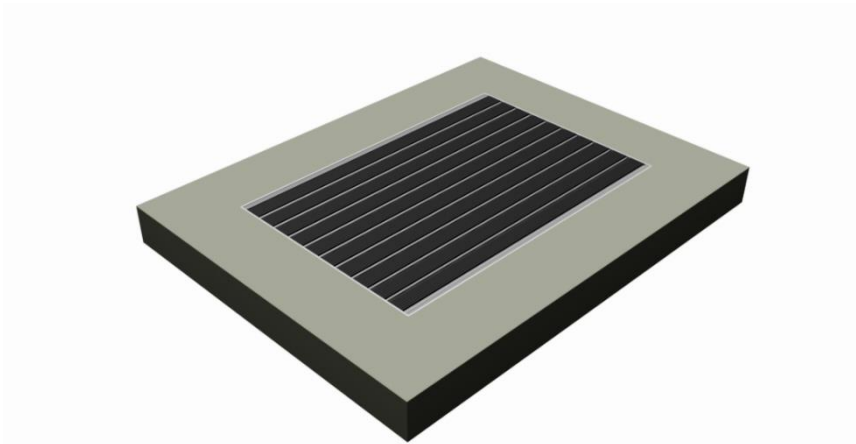


Installation Instructions

ENTRANCE MAT SYSTEMS – CARPET INSERT SERIES (AM1000)

STEP 6 COMPLETE INSTALLATION

- It is necessary to cover the installation with ¾" plywood until all additional project work is completed. This will protect the mat from potential abuse during the construction phase. Damage occurring from inadequate protection during this phase may void the manufacturer's warranty.



STEP 7 CLEANING AND MAINTENANCE INSTRUCTION

- Manufacturer's suggested safe rolling for 500 lbs per wheel. Heavy loads beyond this weight may damage the units, contributing to their premature failure or creating a tripping hazard.
- Vacuum surface regularly with beater brush attachment to allow contact with various surfaces of entrance flooring.
- Before deep cleaning the surface, roll unit back to remove dirt collected underneath as needed. Dirt should be removed with professional vacuum cleaner and should not be allowed to build up to the point where a level mat surface is affected.
- Deep clean quarterly, either by removing the unit in an area where it can be cleaned with a power washer (on light setting to avoid mat damage) or shampoo the unit in place (soap/water extraction).
- It is recommended that shampooing take place overnight to allow mat time to dry thoroughly before heavy traffic resumes.
- Suggestions for pre-treating the area prior to shampooing.
 - Remove gum or other sticky substances by applying a commercial freeze spray to the affected area. This should allow the residue to break off safely.
 - For ground-in dirt showing in high traffic areas, add one cup of bleach per gallon of warm water and use stiff brush to pre-treat that mats.
 - If aluminum needs to be cleaned, use stiff bristle brush to clean with shampoo mixture prior to shampooing the entire unit.
- To achieve the most effective suction of the shampooer, run the wand perpendicular to the rails and not along the length of the mat strips.
- Take care when mopping the surrounding floor area. Keep mop away from mat or grid. The aggressive texture of the mat inserts may grab the lint when the mop comes in contact, potentially causing unsightly lint collection at the edges of the unit.
- For Carpet Inserts' sales enquiry, kindly drop an email to sales@ontariosa.com or contact the following number: +971 4 2776760.

Installation Instructions

ENTRANCE MAT SYSTEMS – CARPET INSERT SERIES (AM1000)

MAT ASSEMBLY

- Slide the mat insert on the aluminum carrier till they aligned.
- Slide the vinyl connector on the aluminum carrier then slide another aluminum carrier to the vinyl connector. Repeat process till reach the appropriate length.
- Connect the end spacer on the leading and trailing end aluminum carrier.

