

MODEL : XWMS & XWCMS

Description:

Surface mounted aluminum wall and ceiling ,expansion joint cover ,with concealed fixing mechanism and vapor barrier.

Technical Data:

- Metals :Extruded Aluminum - 6063-T6 ASTM B221
- Elastomeric Seals: Single durometer Duroflex Gasket ASTM D2000
- Clips: 2" Wide 6063-T6 ASTM B221
- Vapor barrier: Polyethylene ASTM E 1745-97

Material Finishes:

- Exposed aluminum sections are clear anodized as standard, or can be powder coating . All other sections are supplied mill finished.

Limitations:

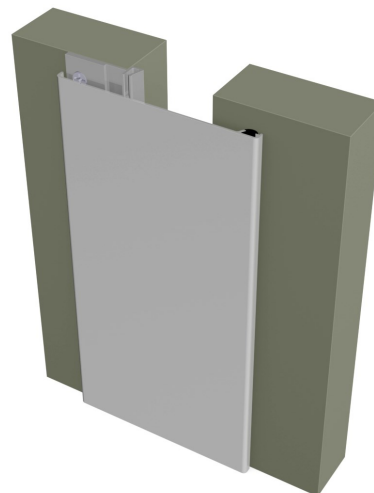
- Standard length 3 meter
- Maximum length 6.1 meter

Optional Accessories:

- -

Installation:

See manufacturer's standard installation instructions.



Key Features:

- Snap -in clip mechanism.
- Movement +/-100%
- Tamper-proof system
- Can be powder coated to match the adjacent wall finish

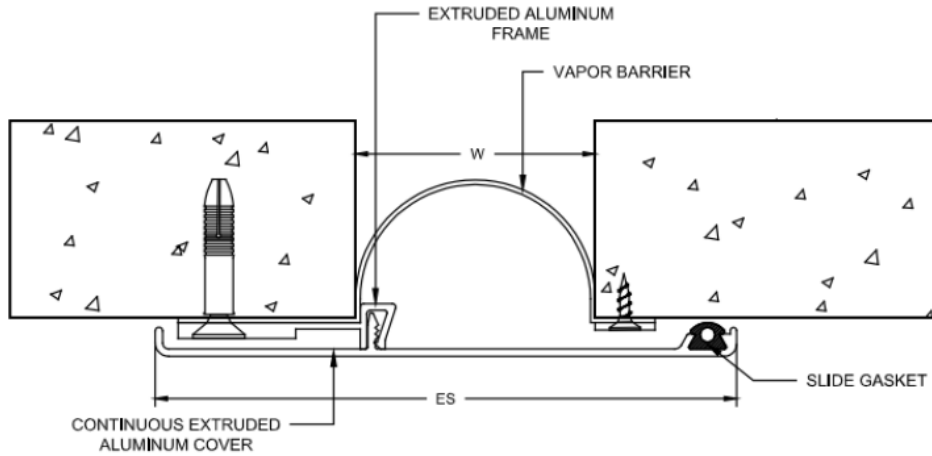
Applications:

- Where flush covers cannot be mounted into the wall structure
- For all types of exterior wall finishes
- Available for gap sizes of 1", 2", 3" & 4"*

**Contact factory for larger gap sizes*

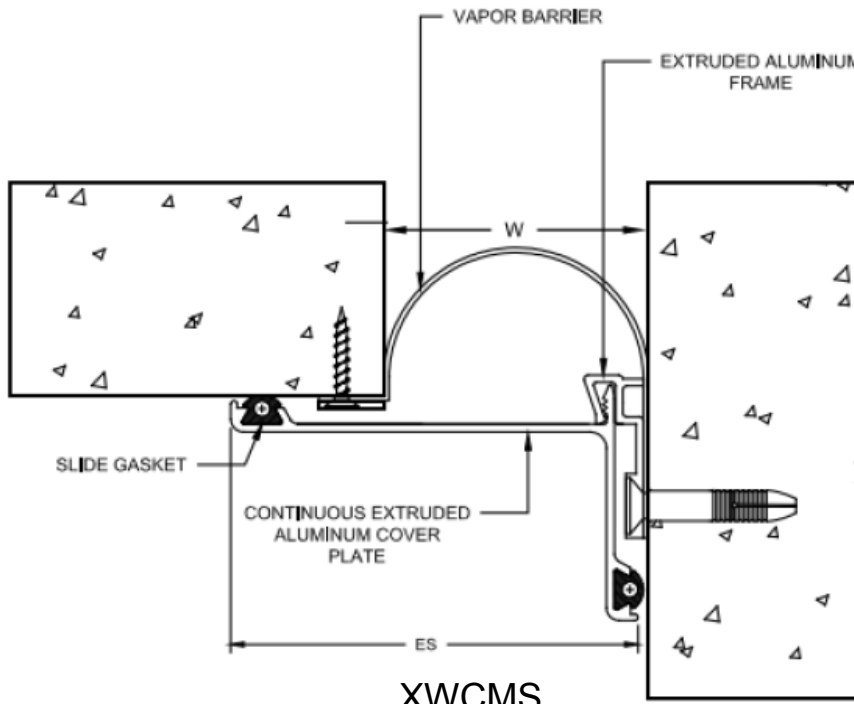
Model	Min Joint Opening	Nominal Joint Width (W)	Max Joint Opening	Exposed Surface (ES)	Overall Width	Overall Height
XWMS1	0.30"(8mm)	1.00"(25mm)	2.00"(51mm)	3.37"(86mm)	3.37"(86mm)	N/A-Surface Mount
XWMS2	0.30"(8mm)	2.00"(51mm)	3.00"(76mm)	4.37"(111mm)	4.37"(111mm)	N/A-Surface Mount
XWMS3	0.35"(9mm)	3.00"(76mm)	4.50"(114mm)	6.11"(155mm)	6.11"(155mm)	N/A-Surface Mount
XWMS4	0.35"(9mm)	4.00"(102mm)	6.00"(152mm)	7.61"(193mm)	7.61"(193mm)	N/A-Surface Mount
XWCMS1	0.30"(8mm)	1.00"(25mm)	2.00"(51mm)	2.16"(55mm)	2.16"(55mm)	N/A-Surface Mount
XWCMS2	0.30"(8mm)	2.00"(51mm)	3.00"(76mm)	3.18"(81mm)	3.18"(81mm)	N/A-Surface Mount
XWCMS3	0.35"(9mm)	3.00"(76mm)	4.50"(114mm)	4.92"(125mm)	4.92"(125mm)	N/A-Surface Mount
XWCMS4	0.35"(9mm)	4.00"(102mm)	6.00"(152mm)	6.34"(161mm)	6.34"(161mm)	N/A-Surface Mount

Wall to Wall



XWMS

Wall Corner



XWCMS