

MODEL : WTG & WCTG

Description:

Flush wall /ceiling covers with exposed aluminum center plate and dual durometer gasket .

Technical Data:

- Metals :Extruded aluminum - 6063-T6 ASTM B221
- Elastomeric seals: Dual durometer gasket ASTM D2000

Material Finishes:

- Aluminium frame and clips are in mill as standard finish.
- Dual durometer gasket is available in black, gray, beige and white* colors



Limitations:

- Standard length 3 meter
- Maximum length 6.1 meter

Optional Accessories:

- Fire barrier

Installation:

See manufacturer's standard installation instructions.

Key Features:

- Designed for wall and ceiling application
- Movement : +/- 50%
- Highly durable dual durometer gasket

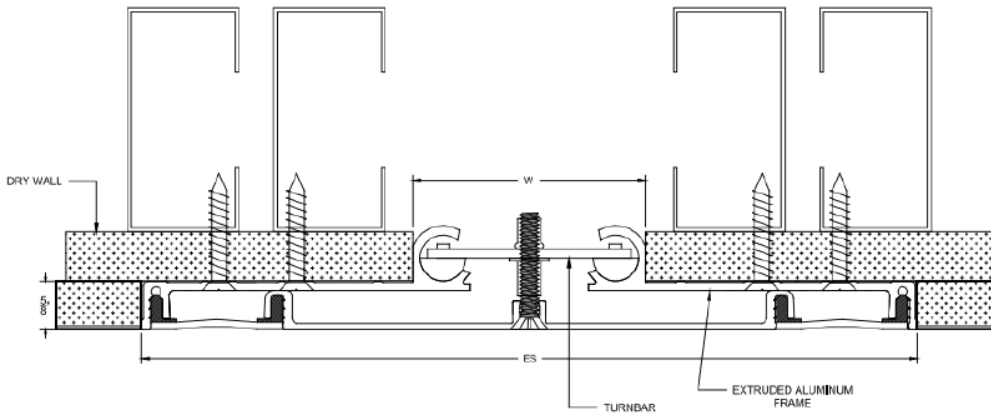
Applications:

- Where larger thermal movement is required
- Where hygiene is important
- Suitable most wall and ceiling finishes
- Available for 1", 2", 3" and 4" gap sizes

**Subject to minimum order quantity*

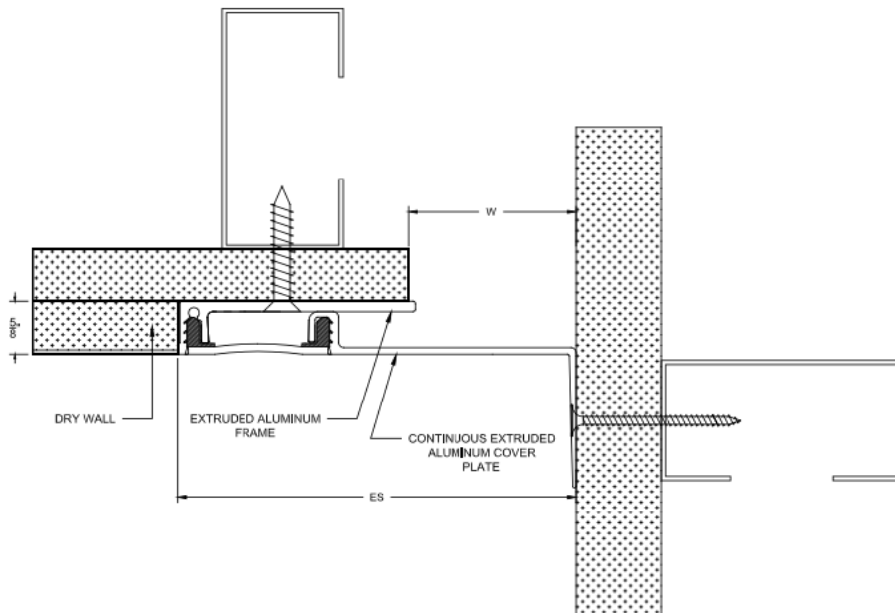
Model	Min Joint Opening	Nominal Joint Width (W)	Max Joint Opening	Exposed Surface (ES)	Overall Width	Overall Height
WTG1	0.35"(9mm)	1.00"(25mm)	2.00"(51mm)	7.49"(190mm)	7.49"(190mm)	1.18"(30mm)
WTG2	1.00"(25mm)	2.00"(51mm)	3.00"(76mm)	7.49"(190mm)	7.49"(190mm)	1.18"(30mm)
WTG3	1.50"(38mm)	3.00"(76mm)	4.50"(114mm)	10.00"(254mm)	10.00"(254mm)	1.34"(34mm)
WTG4	2.50"(63mm)	4.00"(102mm)	5.52"(140mm)	11.00"(279mm)	11.00"(279mm)	1.34"(34mm)
WCTG1	0.00"(0mm)	1.00"(25mm)	1.50"(38mm)	3.28"(83mm)	3.28"(83mm)	1.18"(30mm)
WCTG2	1.18"(30mm)	2.00"(51mm)	2.45"(62mm)	4.28"(109mm)	4.28"(109mm)	1.18"(30mm)
WCTG3	1.50"(38mm)	3.00"(76mm)	3.85"(98mm)	6.50"(165mm)	6.50"(165mm)	1.34"(34mm)
WCTG4	3.00"(76mm)	4.00"(102mm)	4.53"(115mm)	7.49"(190mm)	7.49"(190mm)	1.34"(34mm)

Wall to Wall



WTG

Wall Corner



WCTG