

MODEL : WGP & WCGP

Description:

Recesses mounted, gasketed expansion joint cover for use on plastered finished walls.

Technical Data:

- Metals :Extruded Aluminum - 6063-T6 ASTM B221 ,Clips 2" wide -6063-T6 ASTM B221
- Elastomeric Seals: Dual Durometer Gasket ASTM D2000

Material Finishes:

- Aluminum frame and clips are in mill as standard finish.
- Dual durometer gasket is available in black, gray, beige and white* colors.

Limitations:

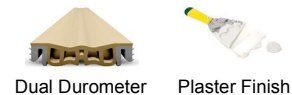
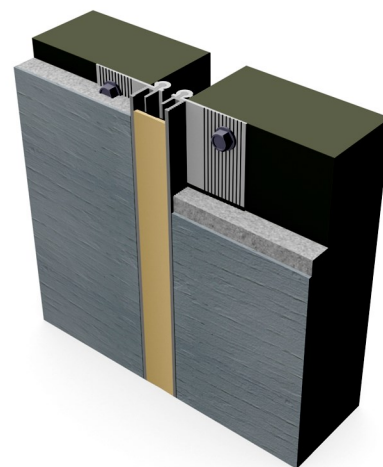
- Standard length 3 meter
- Maximum length 6.1 meter

Optional Accessories:

- Fire barrier

Installation:

See manufacturer's standard installation instructions.



Key Features:

- Aluminum clip retainer to prevent cracking in plaster
- Movement : +/- 25%
- Highly durable dual durometer gasket

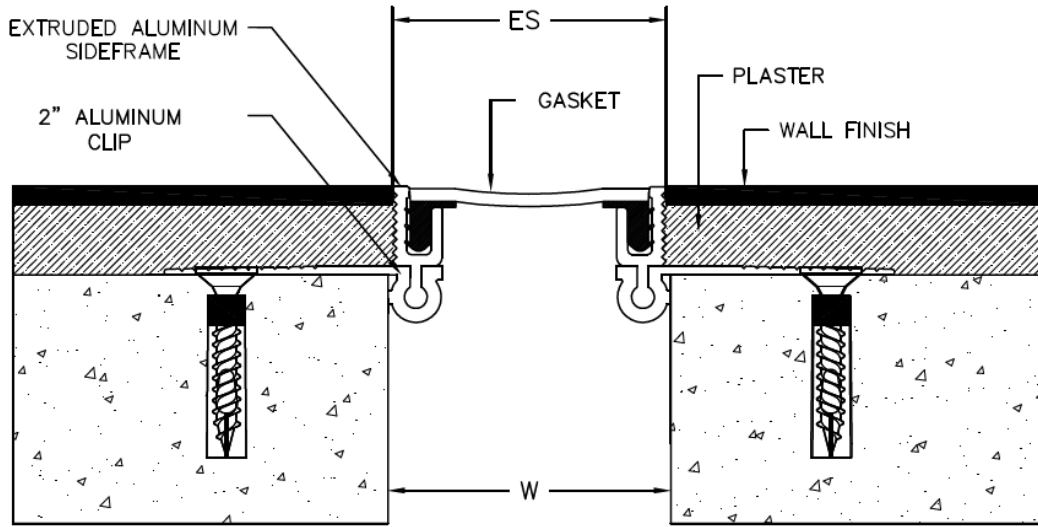
Applications:

- Suitable plaster finished walls
- Where hygiene is important
- Where minimal visual impact is preferred
- Suitable for 1" & 2" gaps

*Subject to minimum order quantity

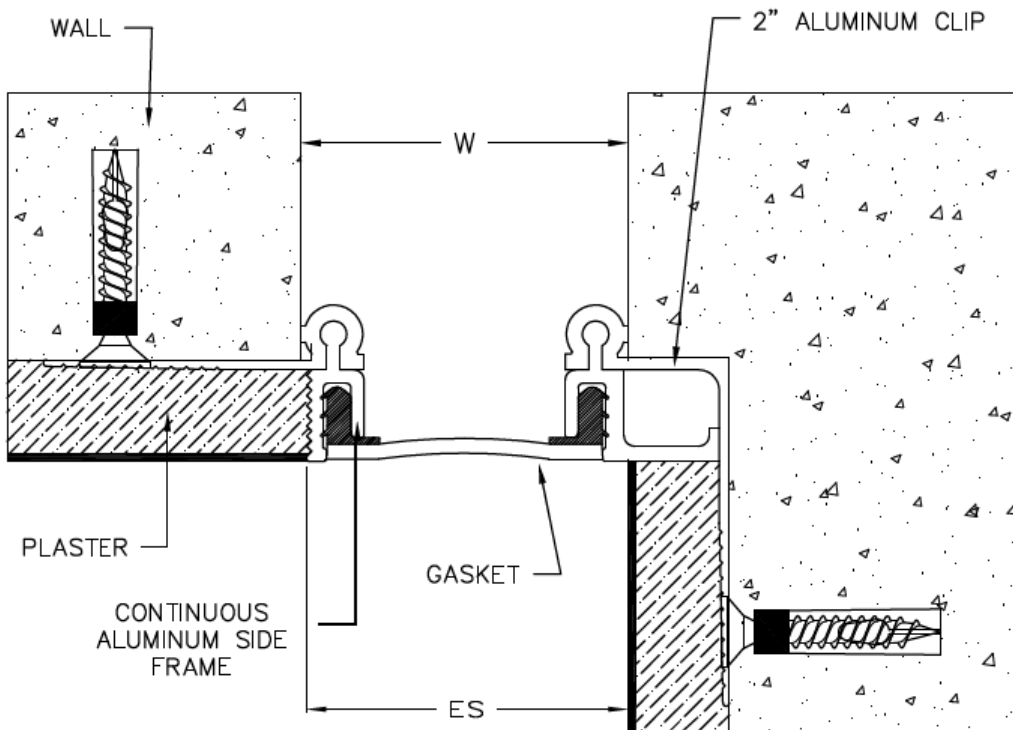
Model	Min Joint Opening	Nominal Joint Width (W)	Max Joint Opening	Exposed Surface (ES)	Overall Width	Overall Height
WGP1	0.60"(15mm)	1.00"(25mm)	1.25"(32mm)	1.09"(28mm)	4.16"(106mm)	0.62"(16mm)
WGP2	0.60"(15mm)	2.00"(51mm)	2.50"(64mm)	1.93"(49mm)	5.16"(131mm)	0.62"(16mm)
WCGP1	0.60"(15mm)	1.00"(25mm)	1.25"(32mm)	1.05"(27mm)	3.20"(81mm)	0.62"(16mm)
WCGP2	0.60"(15mm)	2.00"(51mm)	2.50"(64mm)	1.97"(50mm)	4.20"(107mm)	0.62"(16mm)

Wall to Wall



WGP

Wall Corner



WCGP