

MODEL : FSR & FWSR

Description:

Sealant-free seismic expansion joint series are designed for interior and exterior applications where cover concealment is desired .

Center pan is designed to accommodate adjacent floor finish as infill for maximum concealment.

Technical Data:

- Metals :Extruded Aluminum - (6063-T5,T6) & (6061-T5,T6) ASTM B221
- Turnbar: Aluminum Tube, Cast Stainless Steel Ends - Type 304 ASTM A167, A240A,A240M

Point Load Rating:

- 1100lbs (500kg)

Material Finishes:

- All aluminum frames are in mill as standard finish

Limitations:

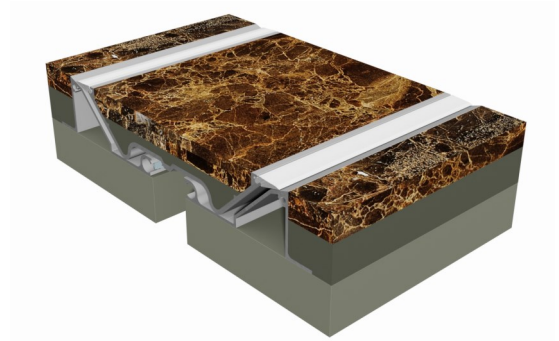
- Standard length 3 meter
- Maximum length 6.1 meter

Optional Accessories:

- Moisture barrier, fire barrier

Installation:

See manufacturer's standard installation instructions.



Bump Free



Compliant



Load Rating

Key Features:

- Sealant -free design for maintenance free function
- Seismic model with thermal and vertical displacement capability
- Movement +/-50%
- Twist lock turn bar for reduced installation cost
- Minimum visual impact

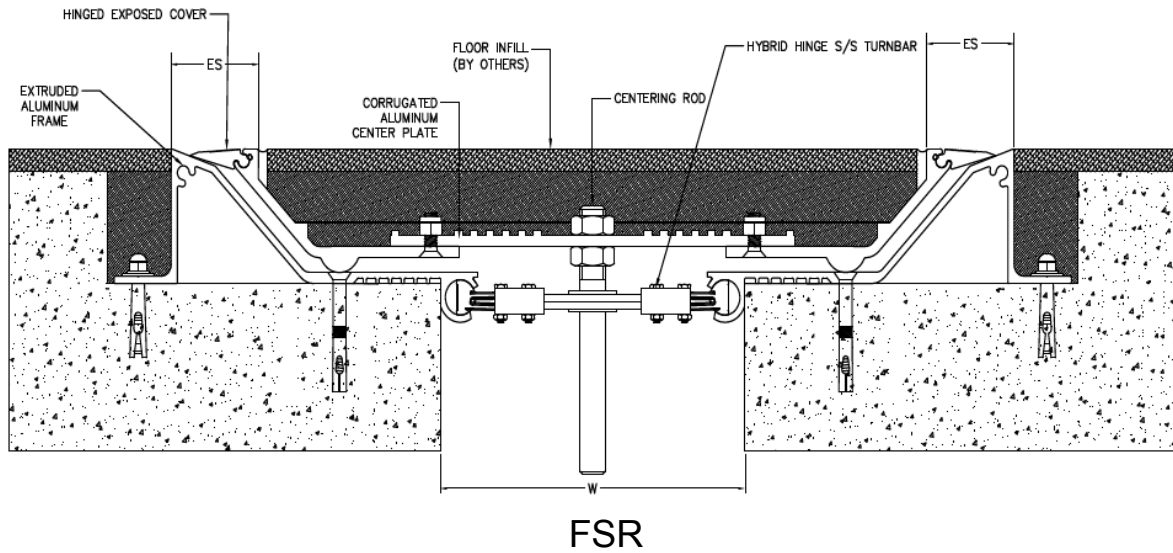
Applications:

- Capable of accommodating all types of floor finishes
- Wheeled equipment trafficable areas
- Available for gap sizes of 2"up to 12"*

**Contact factory for larger gap requirements*

Model	Min Joint Opening	Nominal Joint Width (W)	Max Joint Opening	Exposed Surface (ES)	Overall Width	Overall Height
FSR2	1.00"(25mm)	2.00"(51mm)	3.00"(76mm)	3.46"(88mm)	15.12"(384mm)	2.51"(64mm)
FSR3	1.00"(25mm)	3.00"(76mm)	4.50"(114mm)	3.46"(88mm)	16.14"(410mm)	2.51"(64mm)
FSR4	1.00"(25mm)	4.00"(102mm)	6.00"(153mm)	3.46"(88mm)	17.14"(435mm)	2.51"(64mm)
FSR6	3.00"(76mm)	6.00"(152mm)	9.00"(229mm)	3.46"(88mm)	18.90"(480mm)	2.91"(74mm)
FSR8	3.00"(76mm)	8.00"(203mm)	12.00"(305mm)	3.46"(88mm)	20.91"(531mm)	2.91"(74mm)
FWSR2	1.00"(25mm)	2.00"(51mm)	2.50"(64mm)	2.40"(61mm)	8.57"(218mm)	2.51"(64mm)
FWSR3	1.00"(25mm)	3.00"(76mm)	4.00"(102mm)	2.40"(61mm)	9.57"(243mm)	2.51"(64mm)
FWSR4	1.00"(25mm)	4.00"(102mm)	5.00"(127mm)	2.40"(61mm)	10.57"(268mm)	2.51"(64mm)
FWSR6	1.00"(25mm)	6.00"(152mm)	7.50"(191mm)	2.40"(61mm)	12.44"(316mm)	2.91"(74mm)
FWSR8	1.00"(25mm)	8.00"(203mm)	10.00"(254mm)	2.40"(61mm)	14.44"(367mm)	2.91"(74mm)

Floor to Floor



Floor to Wall

