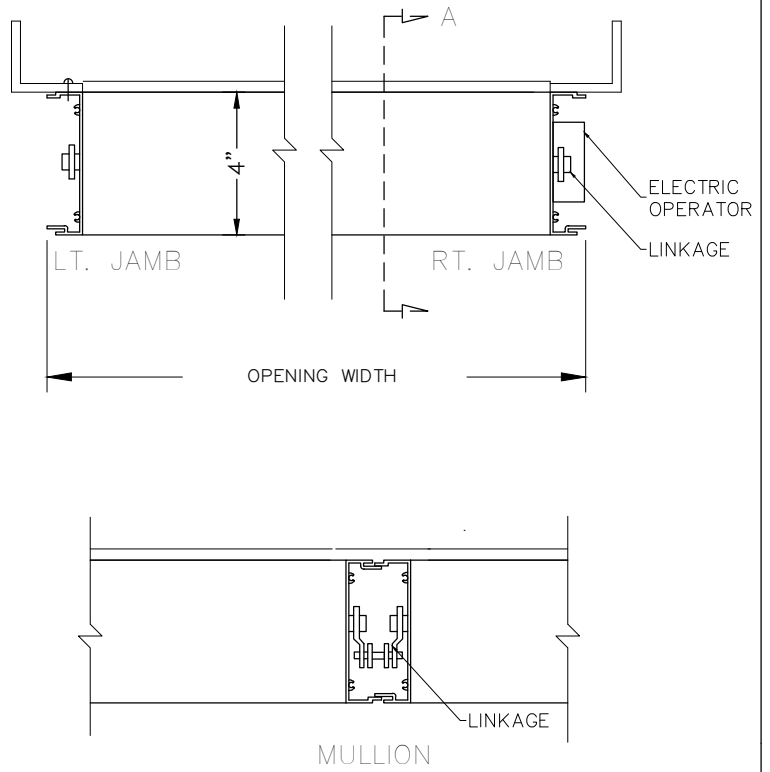
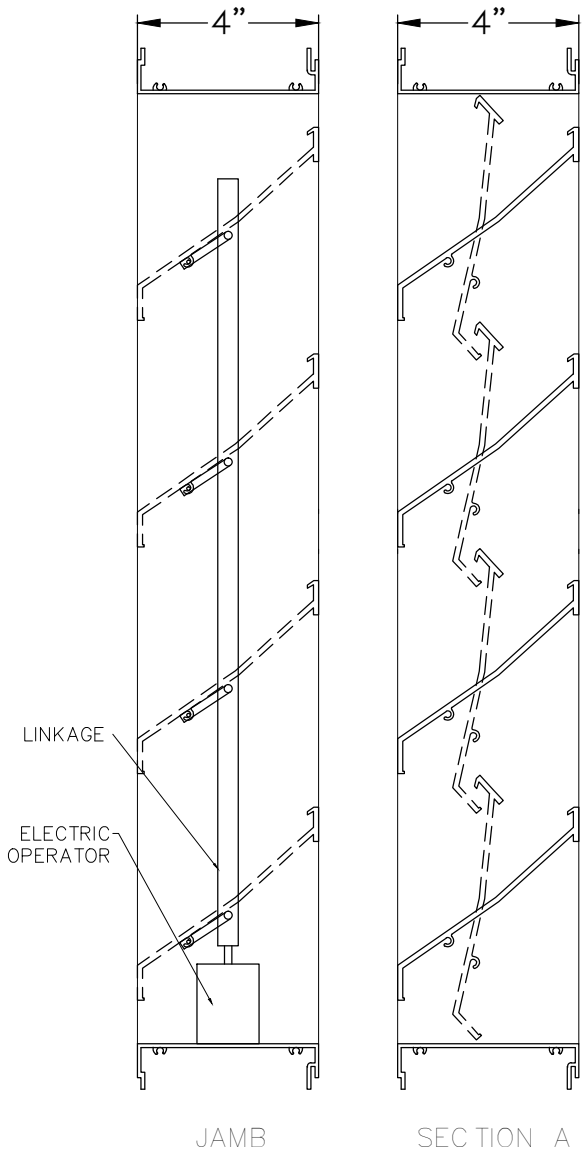


MODEL: HP-445 OPERABLE



OSA EXTRUDED ALUMINUM ELECTRIC OPERATING LOUVER FRAMES AND BLADES TO BE FABRICATED FROM 6063-T6 ALLOY, WITH REINFORCING BOSSES AND A NOMINAL .081"(2mm) BLADE & FRAME THICKNESS. ALL FASTENERS TO BE STAINLESS STEEL.

OSA-McGILL

ONTARIO SPECIALTY ARCHITECTURE
 1404 Metropolis Tower, Business Bay, Dubai, UAE.
 T:+9714 2776760 F:+9714 2776736
 Email: sales@ontariosa.com
 Web Site: www.ontariosa.com

MODEL DRAWING

FINISHES

- MILL FINISH
- 5000 SERIES AAMA -603 BAKED ENAMEL
- 10000 SERIES AAMA -605.2 KYNAR 2 COAT
- 15000 SERIES AAMA -605.2 KYNAR 3 COAT
- CLEAR ANODIZING .0004 .0007
- COLOUR ANODIZING _____

COLOUR # _____

PROJECT: -		
ARCH/ENG: -		
CONTRACTOR: -		
REPRESENTATIVE: ONTARIO SPECIALTY ARCHITECTURE		
SCALE	DATE	SHEET
NTS	-	1 OF 1