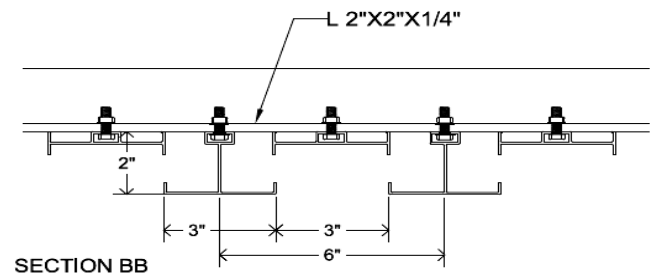
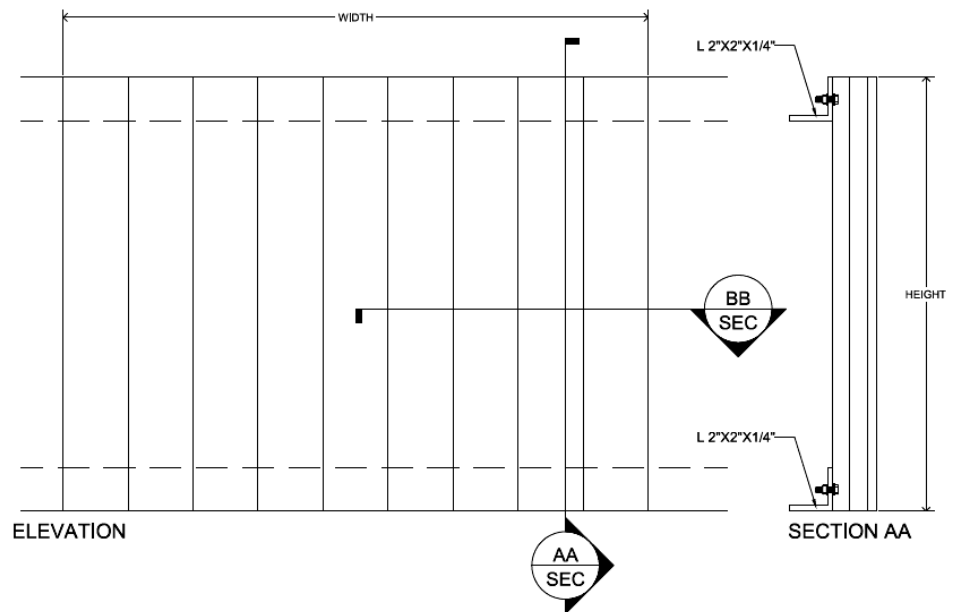


Model—VSV-320

VISION SCREEN



FEATURES:

- ◆ Continuous blade assembly
- ◆ Good sight-proofing characteristics

Material & Finishes:

1. VSV-320 SCREEN comprises
 - a. Blades: Vertical line blade
2. Metal Thickness: Mullion 0.081 inch (2.0 mm); blades 0.081 inch (2.0 mm).
3. Finish: PE-SDF / PVDF / Anodize after fabrication
4. Color: As scheduled.
5. Mullions: Concealed or Exposed.
6. Screens: Bird mesh / Insect mesh AVAILABLE AS OPTIONAL ACCESSORIES.
7. Screen location: Interior
8. Screening Material: Aluminium / Stainless Steel

Louver Construction:

1. Wind Load Resistance: Design to resist +ve and -ve wind load of ___ psf (___ kPa) without damage or permanent deformation.
2. Blades: One piece extrusion blades with reinforcing bosses snap-locked to heavy-gage extruded aluminum blade braces, attached to structural supports. Each blade brace is mechanically secured to structure using stainless steel fastenings.
3. Supplied semi-knocked down for field assembly.
4. Mitered corners
5. Exposed edges and ends of metal dressed smooth, free from sharp edges.

Warranty:

OSA-McGill louvers warranted for 2 years against defective material and workmanship, and 20 Years for Finishes.