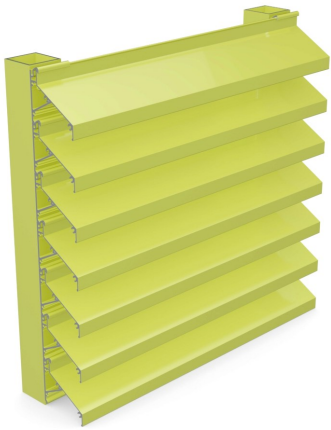


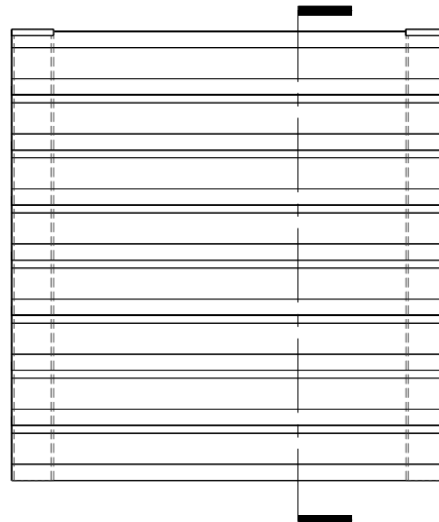
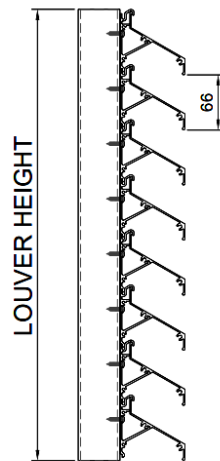
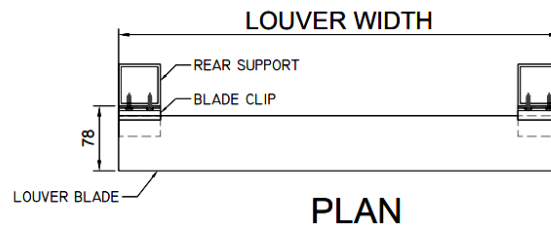
# Model—SL-250

## 78mm DEEP HORIZONTAL FIXED BLADE LOUVER



### PERFORMANCE

- Free Area: **50%** , based on a test sample of 48in (1219.2mm) x 48in (1219.2mm)



### Suggested Specifications:

General: Furnish and install where indicated on drawings 78mm High Performance Louver Model.

### System Description:

OSA high performance series; extruded aluminum construction; frame with channel profile; corner joints mitered and mechanically fastened, with intermediate mullions; gutters

### Material & Finishes:

1. SL-250 comprises
  - a. Blades: 66mm deep Horizontal Fixed Blade
  - b. Blade Clip: 37mm deep
  - c. Rear Vertical Support (Square/Rectangular Hollow Section)
2. Finish: PE-SDF / PVDF / Anodize after fabrication
3. Color: As scheduled
4. Mullions: Concealed
5. Screens: Bird mesh / Insect mesh
6. Screen location: Interior
7. Screening Material: Aluminium / Stainless Steel

### Louver Construction:

1. Wind Load Resistance: Design to resist +ve and -ve wind load of \_\_\_ psf (\_\_\_ kPa) without damage or permanent deformation.
2. Blades: One piece extrusions with reinforcing bosses, supported and lined up with heavy-gage extruded aluminum blade braces, positively interlocked to each blade and mechanically secured to structure by aluminum and stainless steel fastenings.
3. Exposed edges and ends of metal dressed smooth, free from sharp edges.
4. Exposed connections and joints constructed to exclude water.

# Model—SL-250

78mm DEEP HORIZONTAL FIXED BLADE LOUVER



		FREE AREA (ft <sup>2</sup> and m <sup>2</sup> )									
		WIDTH (IN & mm)									
		12	24	36	48	60	72	84	96	108	120
		305	610	914	1219	1524	1829	2134	2438	2743	3048
HEIGHT (IN & mm)	12	0.43	0.86	1.29	1.73	2.16	2.60	3.03	3.46	3.90	4.33
	305	0.04	0.08	0.12	0.16	0.20	0.24	0.28	0.32	0.36	0.40
	24	0.90	1.81	2.72	3.62	4.53	5.44	6.35	7.26	8.17	9.08
	610	0.08	0.17	0.25	0.34	0.42	0.51	0.59	0.67	0.76	0.84
	36	1.46	2.93	4.41	5.89	7.37	8.84	10.32	11.80	13.27	14.75
	914	0.14	0.27	0.41	0.55	0.68	0.82	0.96	1.10	1.23	1.37
	48	1.96	3.95	5.94	7.93	9.92	11.91	13.90	15.89	17.88	19.87
	1219	0.18	0.37	0.55	0.74	0.92	1.11	1.29	1.48	1.66	1.85
	60	2.47	4.97	7.47	9.97	12.47	14.97	17.47	19.96	22.46	24.96
	1524	0.23	0.46	0.69	0.93	1.16	1.39	1.62	1.86	2.09	2.32
	72	3.03	6.09	9.16	12.23	15.30	18.37	21.43	24.50	27.57	30.64
	1829	0.28	0.57	0.85	1.14	1.42	1.71	1.99	2.28	2.56	2.85
	84	3.50	7.05	10.60	14.15	17.70	21.25	24.80	28.35	31.90	35.45
	2134	0.33	0.66	0.99	1.32	1.65	1.98	2.31	2.64	2.97	3.30
	96	4.04	8.13	12.22	16.31	20.40	24.49	28.58	32.67	36.76	40.85
	2438	0.38	0.76	1.14	1.52	1.90	2.28	2.66	3.04	3.42	3.80
108	4.56	9.19	13.81	18.43	23.06	27.68	32.31	36.93	41.55	46.18	
2743	0.42	0.85	1.28	1.71	2.14	2.57	3.00	3.43	3.86	4.29	
120	5.05	10.16	15.27	20.39	25.50	30.61	35.72	40.84	45.95	51.06	
3048	0.47	0.94	1.42	1.89	2.37	2.85	3.32	3.80	4.27	4.75	